

DM Aktive 2019 - Mixed 40' Hasenheide Berlin



Oil Pattern Distance: **40 Feet**
 Forward Oil Total: **11.68 mL**
 Forward Boards Crossed: **292 Boards**

Reverse Brush Drop: **40 Feet**
 Reverse Oil Total: **9.48 mL**
 Reverse Boards Crossed: **237 Boards**

Oil Per Board: **40 uL**
 Volume Oil Total: **21.16 mL**
 Total Boards Crossed: **529 Boards**

| | Start | Stop | Loads | Speed | Crossed | Start | End | Feet | T.Oil |
|---|-------|------|-------|-------|---------|-------|------|------|-------|
| 1 | 2L | 2R | 3 | 18 | 111 | 0.0 | 5.1 | 5.1 | 4440 |
| 2 | 10L | 10R | 4 | 18 | 84 | 5.1 | 15.3 | 10.2 | 3360 |
| 3 | 10L | 10R | 3 | 18 | 63 | 15.3 | 22.9 | 7.6 | 2520 |
| 4 | 12L | 12R | 2 | 18 | 34 | 22.9 | 28.0 | 5.1 | 1360 |
| 5 | 2L | 2R | 0 | 22 | 0 | 28.0 | 32.0 | 4.0 | 0 |
| 6 | 2L | 2R | 0 | 30 | 0 | 32.0 | 40.0 | 8.0 | 0 |

| | Start | Stop | Loads | Speed | Crossed | Start | End | Feet | T.Oil |
|---|-------|------|-------|-------|---------|-------|------|-------|-------|
| 1 | 2L | 2R | 0 | 30 | 0 | 40.0 | 34.0 | -6.0 | 0 |
| 2 | 11L | 11R | 5 | 22 | 95 | 34.0 | 18.5 | -15.5 | 3800 |
| 3 | 10L | 10R | 5 | 18 | 105 | 18.5 | 5.8 | -12.7 | 4200 |
| 4 | 2L | 2R | 1 | 14 | 37 | 5.8 | 3.9 | -1.9 | 1480 |
| 5 | 2L | 2R | 0 | 14 | 0 | 3.9 | 0.0 | -3.9 | 0 |

Conditioner:
Type In or Select One

TransferType:
Type In or Select One

Forward



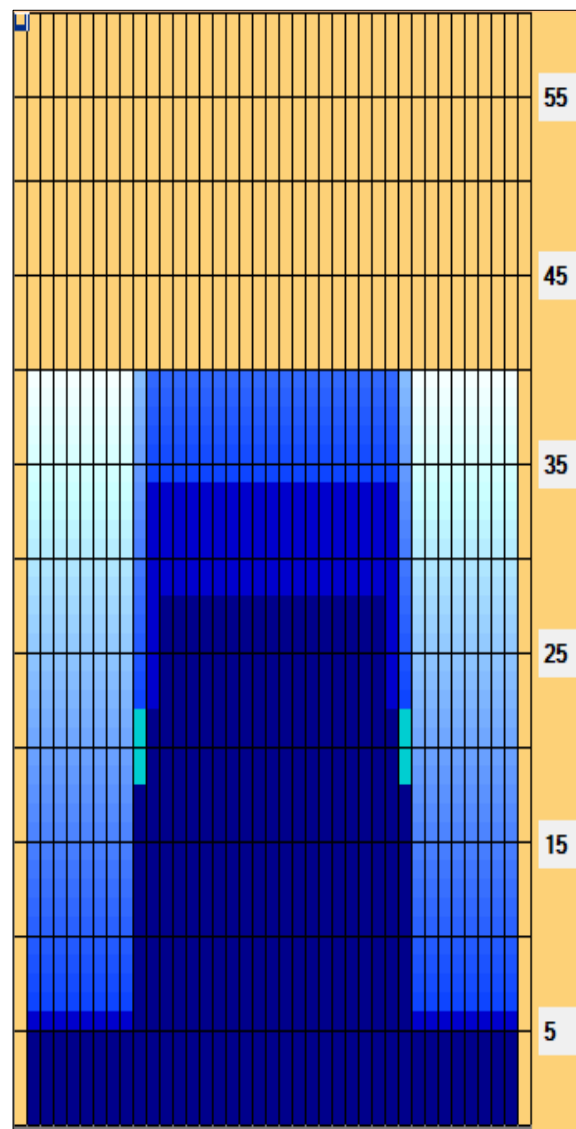
Reverse



Combined

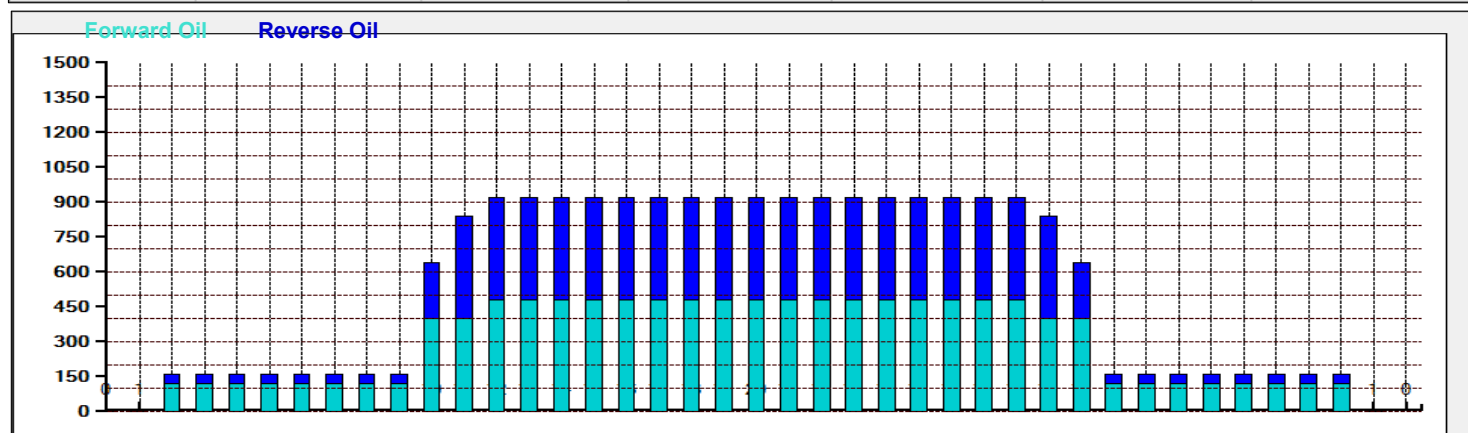


Buff



Dieses Oelmuster wurde uploaded von Schlitz #1 In Lane Machine On 16.05.2019 19:27

| Item | 3L-7L:18L-18R | 8L-12L:18L-18R | 13L-17L:18L-18R | 18L-18R:17R-13R | 18L-18R:12R-8R | 18L-18R:7R-3R |
|------------------|----------------------|---------------------|---------------------|----------------------|---------------------|----------------------|
| Description | Outside Track:Middle | Middle Track:Middle | Inside Track:Middle | Middle: Inside Track | Middle:Middle Track | Middle:Outside Track |
| Track Zone Ratio | 5.75 | 1.69 | 1 | 1 | 1.69 | 5.75 |



Neue Upload#2019136192714489



| | | | | | |
|-------------------------|------------|-------------------------|------------|-----------------------|------------|
| Oil Pattern Distance: | 40 Feet | Reverse Brush Drop: | 40 Feet | Oil Per Board: | 40 uL |
| Forward Oil Total: | 11.68 mL | Reverse Oil Total: | 9.48 mL | Volume Oil Total: | 21.16 mL |
| Forward Boards Crossed: | 292 Boards | Reverse Boards Crossed: | 237 Boards | Total Boards Crossed: | 529 Boards |

DM Aktive 2019 - Doppel 38' Hasenheide Berlin



| | | | | | |
|-------------------------|------------|-------------------------|------------|-----------------------|------------|
| Oil Pattern Distance: | 38 Feet | Reverse Brush Drop: | 38 Feet | Oil Per Board: | 40 uL |
| Forward Oil Total: | 11.44 mL | Reverse Oil Total: | 10.6 mL | Volume Oil Total: | 22.04 mL |
| Forward Boards Crossed: | 286 Boards | Reverse Boards Crossed: | 265 Boards | Total Boards Crossed: | 551 Boards |

| | Start | Stop | Loads | Speed | Crossed | Start | End | Feet | T.Oil |
|---|-------|------|-------|-------|---------|-------|------|------|-------|
| 1 | 2L | 2R | 2 | 14 | 74 | 0.0 | 1.9 | 1.9 | 2960 |
| 2 | 5L | 5R | 2 | 14 | 62 | 1.9 | 5.8 | 3.9 | 2480 |
| 3 | 6L | 6R | 2 | 14 | 58 | 5.8 | 9.7 | 3.9 | 2320 |
| 4 | 8L | 8R | 2 | 14 | 50 | 9.7 | 13.6 | 3.9 | 2000 |
| 5 | 10L | 10R | 2 | 18 | 42 | 13.6 | 18.7 | 5.1 | 1680 |
| 6 | 2L | 2R | 0 | 18 | 0 | 18.7 | 22.0 | 3.3 | 0 |
| 7 | 2L | 2R | 0 | 22 | 0 | 22.0 | 33.0 | 11.0 | 0 |
| 8 | 2L | 2R | 0 | 30 | 0 | 33.0 | 38.0 | 5.0 | 0 |

Forward Reverse More

| | Start | Stop | Loads | Speed | Crossed | Start | End | Feet | T.Oil |
|---|-------|------|-------|-------|---------|-------|------|------|-------|
| 1 | 2L | 2R | 0 | 30 | 0 | 38.0 | 30.0 | -8.0 | 0 |
| 2 | 9L | 9R | 2 | 22 | 46 | 30.0 | 23.8 | -6.2 | 1840 |
| 3 | 7L | 7R | 2 | 18 | 54 | 23.8 | 18.7 | -5.1 | 2160 |
| 4 | 5L | 5R | 2 | 18 | 62 | 18.7 | 13.6 | -5.1 | 2480 |
| 5 | 4L | 4R | 2 | 18 | 66 | 13.6 | 8.5 | -5.1 | 2640 |
| 6 | 2L | 2R | 1 | 14 | 37 | 8.5 | 6.6 | -1.9 | 1480 |
| 7 | 2L | 2R | 0 | 14 | 0 | 6.6 | 0.0 | -6.6 | 0 |

Forward Reverse More

Conditioner:
Type In or Select
One

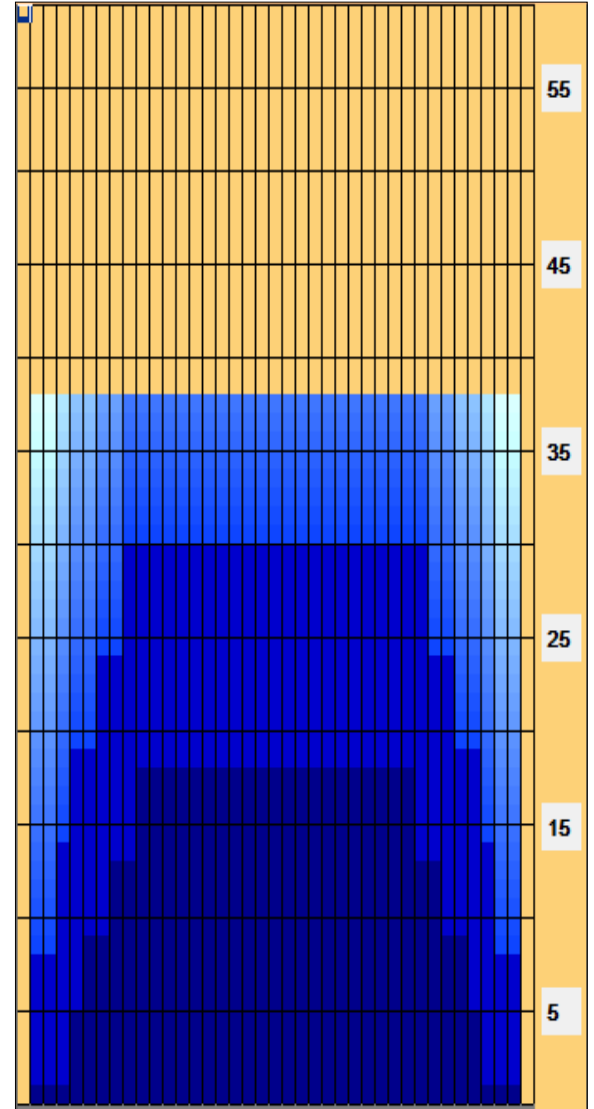
TransferType:
Type In or Select
One

Forward

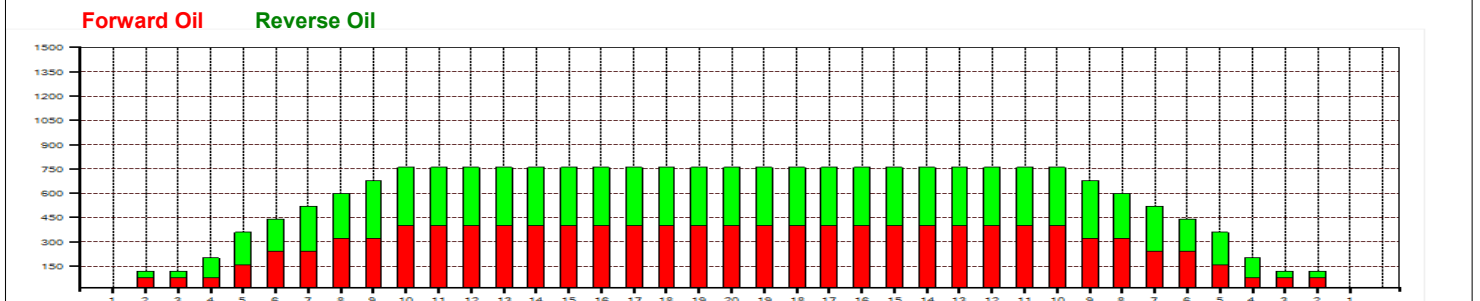
Reverse

Combined

Buff



| Item | 3L-7L:18L-18R | 8L-12L:18L-18R | 13L-17L:18L-18R | 18L-18R:17R-13R | 18L-18R:12R-8R | 18L-18R:7R-3R |
|------------------|----------------------|---------------------|---------------------|----------------------|---------------------|----------------------|
| Description | Outside Track:Middle | Middle Track:Middle | Inside Track:Middle | Middle: Inside Track | Middle:Middle Track | Middle:Outside Track |
| Track Zone Ratio | 2.32 | 1.07 | 1 | 1 | 1.07 | 2.32 |



DM Aktive 2019 - Einzel 40' Hasenheide Berlin



Oil Pattern Distance: **40 Feet**
 Forward Oil Total: **10.92 mL**
 Forward Boards Crossed: **273 Boards**

Reverse Brush Drop: **40 Feet**
 Reverse Oil Total: **12.08 mL**
 Reverse Boards Crossed: **302 Boards**

Oil Per Board: **40 uL**
 Volume Oil Total: **23 mL**
 Total Boards Crossed: **575 Boards**

| | Start | Stop | Loads | Speed | Crossed | Start | End | Feet | T.Oil |
|---|-------|------|-------|-------|---------|-------|------|------|-------|
| 1 | 2L | 2R | 3 | 10 | 111 | 0.0 | 2.8 | 2.8 | 4440 |
| 2 | 5L | 5R | 2 | 14 | 62 | 2.8 | 6.7 | 3.9 | 2480 |
| 3 | 7L | 7R | 2 | 18 | 54 | 6.7 | 11.8 | 5.1 | 2160 |
| 4 | 8L | 8R | 1 | 22 | 25 | 11.8 | 14.9 | 3.1 | 1000 |
| 5 | 10L | 10R | 1 | 22 | 21 | 14.9 | 18.0 | 3.1 | 840 |
| 6 | 2L | 2R | 0 | 26 | 0 | 18.0 | 40.0 | 22.0 | 0 |

| | Start | Stop | Loads | Speed | Crossed | Start | End | Feet | T.Oil |
|---|-------|------|-------|-------|---------|-------|------|-------|-------|
| 1 | 2L | 2R | 0 | 26 | 0 | 40.0 | 34.0 | -6.0 | 0 |
| 2 | 10L | 10R | 4 | 22 | 84 | 34.0 | 21.6 | -12.4 | 3360 |
| 3 | 8L | 8R | 3 | 18 | 75 | 21.6 | 14.0 | -7.6 | 3000 |
| 4 | 7L | 7R | 3 | 14 | 81 | 14.0 | 8.1 | -5.9 | 3240 |
| 5 | 5L | 5R | 2 | 14 | 62 | 8.1 | 4.2 | -3.9 | 2480 |
| 6 | 2L | 2R | 0 | 10 | 0 | 4.2 | 0.0 | -4.2 | 0 |

Conditioner:
Type In or Select One

TransferType:
Type In or Select One

Forward



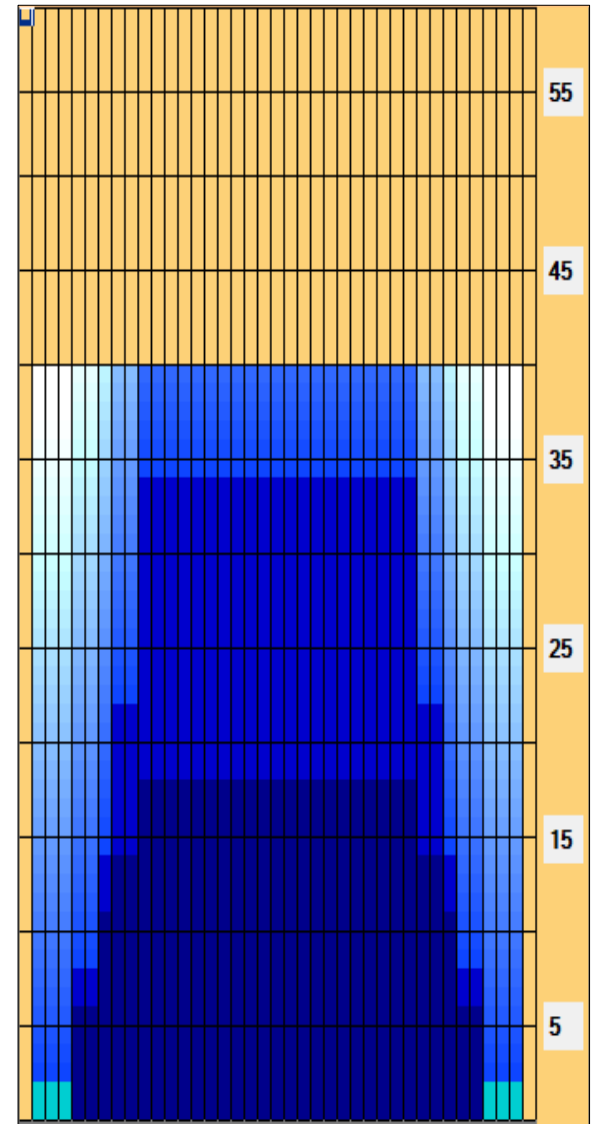
Reverse



Combined

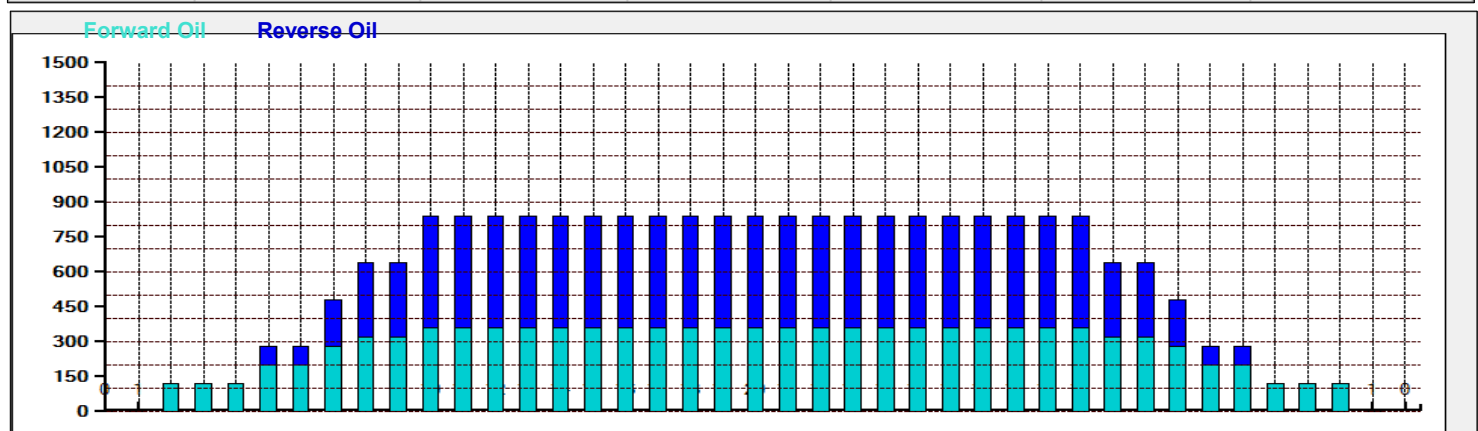


Buff



Dieses Oelmuster wurde uploaded von Schlitz #2 In Lane Machine On 16.05.2019 19:30

| Item Description | 3L-7L:18L-18R Outside Track:Middle | 8L-12L:18L-18R Middle Track:Middle | 13L-17L:18L-18R Inside Track:Middle | 18L-18R:17R-13R Middle: Inside Track | 18L-18R:12R-8R Middle:Middle Track | 18L-18R:7R-3R Middle:Outside Track |
|------------------|---------------------------------------|---------------------------------------|--|---|---------------------------------------|---------------------------------------|
| Track Zone Ratio | 3.28 | 1.11 | 1 | 1 | 1.11 | 3.28 |



Neue Upload#2019136193011822



| | | | | | |
|-------------------------|------------|-------------------------|------------|-----------------------|------------|
| Oil Pattern Distance: | 40 Feet | Reverse Brush Drop: | 40 Feet | Oil Per Board: | 40 uL |
| Forward Oil Total: | 10.92 mL | Reverse Oil Total: | 12.08 mL | Volume Oil Total: | 23 mL |
| Forward Boards Crossed: | 273 Boards | Reverse Boards Crossed: | 302 Boards | Total Boards Crossed: | 575 Boards |
